

Solar Power is Sun Power!

Solar energy is the most abundant source of energy on Earth, feeding the plants we use for food and fuel and powering the wind and weather in our skies. Today, solar energy is the fastest growing source of electricity due to falling prices and low environmental impacts.

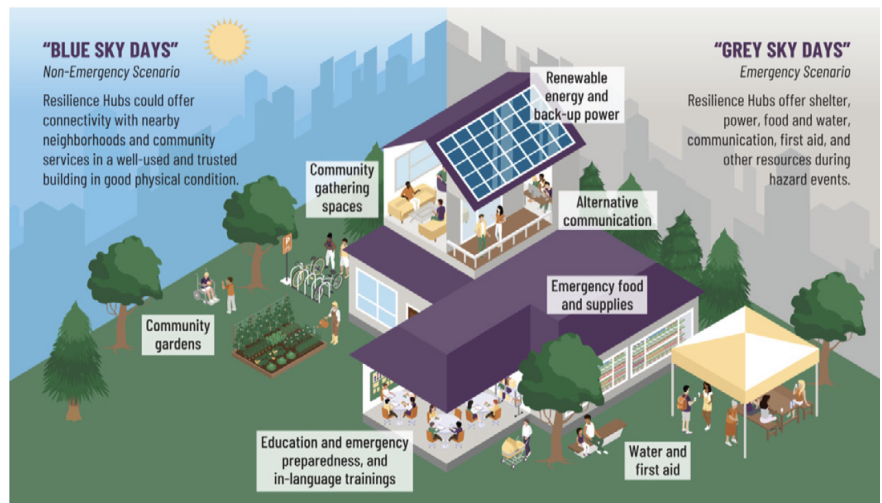
CLEANER AND CHEAPER

In addition to being a clean and renewable resource, solar with battery backup can serve as a good long-term investment for residents, nonprofits, or local businesses by providing consistent utility bill savings. Power produced by solar panels can be sold to the electric grid or used to a battery. For example, the battery can provide power when it is more expensive, to save on electricity costs.

RESILIENT COMMUNITIES

In the event of a power outage, battery storage can keep your building powered. When a building has power during an outage we call this 'energy resilience' because it increases a community's resilience to extreme weather and outages. When that building offers support to the community during adverse conditions, we refer to it as a 'Resilience Hub'.

What Can a Resilience Hub Offer?



Source: Puget Sound Resilience Hubs, Seattle Office of Emergency Management, last accessed February 6, 2025, <https://experience.arcgis.com/experience/171d4e26a1854667ae1f2114e28de5b1/page/Home?views=What-is-a-Resilience-Hub%3F>

SUPPORTING COMMUNITY RESILIENCE

A community center, or other neighborhood gathering spaces, can serve as a solar and battery-powered resilience hub. Solar is not only installed on rooftops, but can also provide shade over a parking lot or playground. A resilience hub is a safe space in the community, providing residents access to electricity and heating/cooling through extreme weather and power outages. **Empower Our Future's Mission: Advancing a Socially Just Clean Energy Economy.** We support communities in exploring whether solar+storage makes sense for them by sharing information and resources on how to plan and pay for a solar+storage system and what it means to become a community resilience hub.

CLEAN ENERGY INCENTIVE NAVIGATOR CONTACTS

Mary Pettigrew, Empower Our Future Resilience Hub Team: 303 641 0078 | mary@ampersand-design.com
Jim Gilbert, Independent Community Power Advocate: 303 499 0969 James.gilbert@stvraintech.com